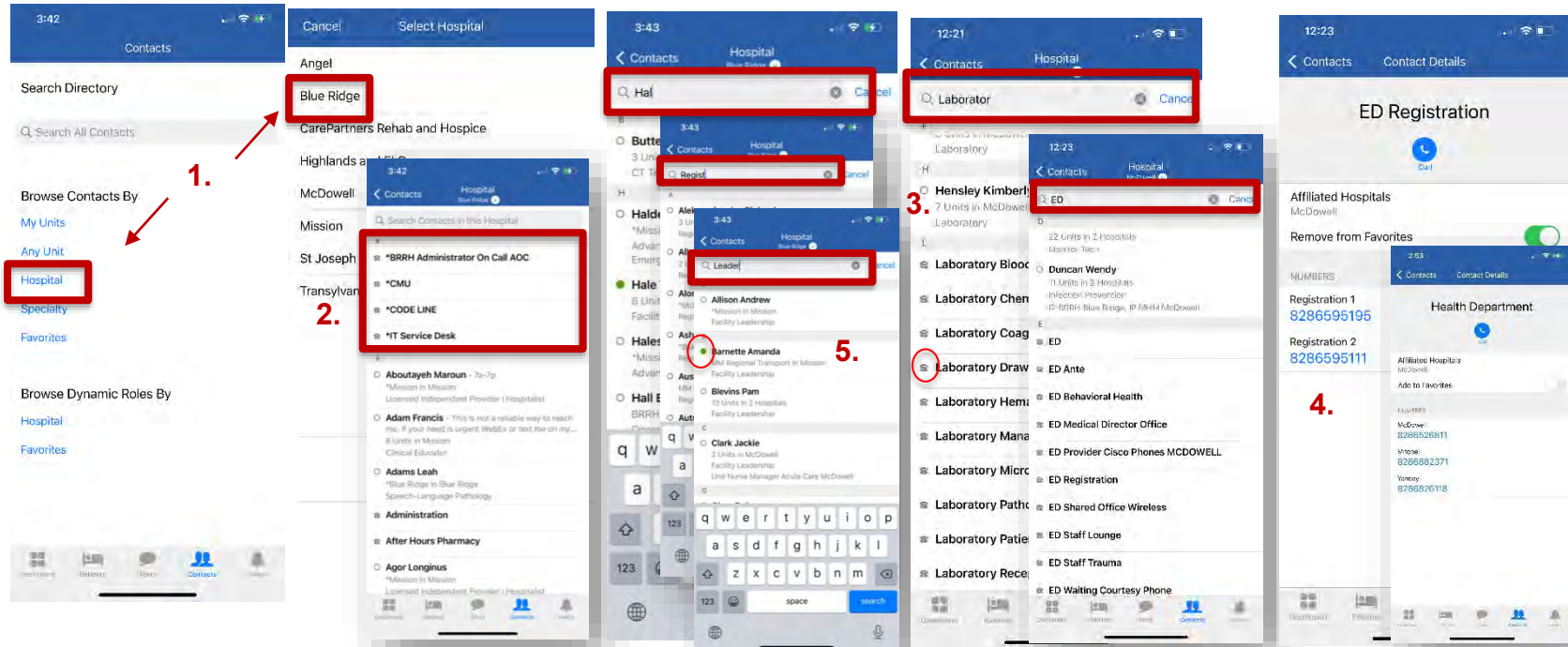


iMobile – Searching the Contact List



Searching via the Hospital list will pull the **complete** directory of numbers for the hospital including non-iMobile numbers such as location/positions.

1. Select *Hospital* then select the desired facility (some users have more or less viewable locations, depending on position).
2. Frequently used numbers are docked at the top of the page.
3. Search for a person by last name first or search by users by role, such as “registered nurse” or “leadership.” Location numbers will also pull when searching via Hospital.

4. Results will be alphabetical. Scroll to find the contact desired.
5. Some locations will have multiple numbers. These options will pull in for the user to choose.
5. The phone icon indicates a non-iMobile number. The circle indicates user, with green being active and gray nonactive.

CONFIDENTIAL – Contains proprietary information.
Not intended for external distribution.